



EARTH OBSERVATION DATA HUB

A UK Pathfinder project delivering access to Earth Observation (EO) data for effective decision-making across government, business and academia. The Earth Observation DataHub (EODH) brings together an expert project delivery team and industrial partners in an ambitious project supported by key stakeholders UKRI NERC, DSIT and UKSA.

Users of the Hub will be able to explore areas of interest in the UK and across the globe, harnessing space derived data to develop an improved understanding of our environment and create insights to support commercial and government decision-making. In the initial phase, the Hub will additionally provide service interfaces to particular climate and land applications. It will also enable selected users to support their own analyses, services and tools using the Hub's workflow and compute environments.

WHO IS THE EARTH OBSERVATION DATA HUB FOR?



GOVERNMENT AND PUBLIC SECTOR

Providing collective purchasing power and a centralised platform to enable cost effective cross department sharing for consistency in policy creation, adoption, monitoring and citizen protection.



BUSINESS

Continuity and investment planning needs understanding of local and global physical and environmental risks. Access to insights from authoritative data sources is key to effective due diligence and regulatory reporting.



ACADEMIA

Creates collaboration opportunities, access to long-term time series of data and workflows enabling more focus on the science for the betterment of the planet and the creation of credible data.



EO COMMUNITY

Government becomes an infrastructure stakeholder for the EO community, and the Hub reduces costs and risks of market entry, creating opportunities for both product and market development.



AIMS OF THE EO DATA HUB

EO Data Hub Pathfinder activities are designed to showcase:

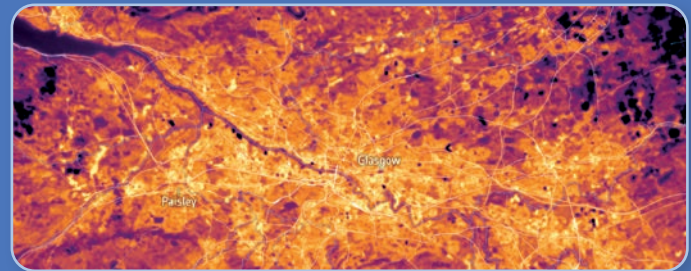


UNIQUE DATA ACCESS

A first, 'single point' of access to the best UK Earth observation data for research, government and business use.

FLEXIBLE AND SUSTAINABLE

Delivering a step change in EO data collective purchasing, access and quality, reducing the need for multiple platforms and data stores. This reduces the UK tax burden and the carbon footprint of data processing.



FULLY TESTED

Co-designed with input from business, academia, and government to meet their needs, with dedicated applications and products available for end-user testing in the summer of 2024.

AUTHENTIC

Designed with the input of world leading academics in the field of EO and scientific measurements to create credible and authoritative data and insights.

HOW DO I GET INVOLVED?

The platform and trial applications are available for customer testing soon.

We welcome expressions of interest in accessing the Hub and the application layers.

Please contact us on enquiries@eodh.ac.uk



eodatahub.org.uk

KEY STAKEHOLDERS:



PROJECT DELIVERY TEAM LED BY NCEO AT CEDA AND THE UNIVERSITY OF LEICESTER:



LEAD INDUSTRIAL PARTNERS:

